

The Newsletter of the Loose Bead Society of Greater Milwaukee
The Loose Bead Society of Greater Milwaukee began in 1999 as a fellowship of kindred spirits with the purpose of sharing and promoting the creation of beautiful beadwork.

Lending a Hand at Vision Forward

Many thanks to Loose Beaders **Mary Hottinger, Susan Beal, Judy Menting, Addie Peterson, Jan Falk, Karen Weinberg, Traci Otte,** and **Sue Stachelski** for assisting five visually challenged women to make beautiful wire wrapped beaded bracelets. The bracelets were a



Mary Hottinger (left) helps Kelly complete wrapping her bracelet.

variation of those fashioned by Loose Bead Society members at a hands-on meeting several months ago.

The April event was held under the auspices of the Vision Forward Association. The Community Service committee sponsors several events a year with them. "There has been very good feedback from Vision Forward," remarked **Michelle De'Brabant**, former head of the Community Service committee. "They appreciate our service."

And the women weren't the only guests. Several were accompanied by their guide dogs, which waited patiently through the wire wrapping and behaved impeccably. "The guide dogs are so wonderful! They just relax under all the tables," said Traci Otte.

(More photos on page 2)

LB Strung Together

Volume 11 Issue 2 Summer 2012

The Thrill of the Hunt

As artists, crafters or hobbyists, of course we sometimes need to shop to support our creativity. In fact, I think part of the allure of our craft is the hunt for the perfect materials, equipment and resources.

We shop for perfect colors, new shapes and types of beads, the latest tools or gadgets, great new books, and thrill in finding a new or unexpected store or show at which to hunt.

We seek out the best stores, shows and online vendors, and the best sources of information. Recommendations and referrals from friends and other LBS members are always fun. It's exciting to sign up for a class. Browsing on the internet can consume an evening. A sale or a bargain can't be beat. We'll travel for beads.

When shopping with friends, especially at a larger venue, it's fun to gather afterward to show off and

compare our treasures. Some shoppers I know like to select a *best of show* purchase!

I confess that I save my packages for a day or two, and then enjoy the new items all over again as I unwrap them and sort everything into the appropriate drawers and containers. And a special treat after a long day is to relax on the sofa with a new book or magazine.

So, the hunt has had results. Sometimes it's satisfying simply to go through the accumulated stash. Maybe you'll be inspired to use an item you've had for awhile (or forgotten); maybe you'll just feel rich spreading the goodies around you on your desk (or bed).

Then we organize it all, which often leads to another quest or addiction: finding the perfect storage system. (But that's another topic worthy of entire articles, books and blogs.)

On occasion, we need to purge the stash and share with friends or sell some treasures (maybe at the LBS rummage sale on July 21).

It's June and many of us are about to head off to the Bead&Button Show, where we'll be in a delirium of shopping and taking classes. Enjoy the hunt!

Oh yes, and don't forget to schedule some time to use those treasures!

– Julie Miller, President



Sue Stachelski (left) assists Charlotte with her bracelet while Charlotte's dog relaxes at their feet. Charlotte loves boxers and her bracelet incorporated several boxer beads and a button.



Jan Falk (left) and Judy Menting (right) help Jane, who was enjoying her first time participating in the Loose Bead Society event.

Becoming an Author —& Online Teacher

Last year, tatting artist **Marilee Rockley** was surprised and delighted to have Annie's Attic ask her to do a tatted jewelry book for them. A product development director for the publishing house had spotted Marilee's tatted jewelry in her Etsy shop and fallen in love with it.

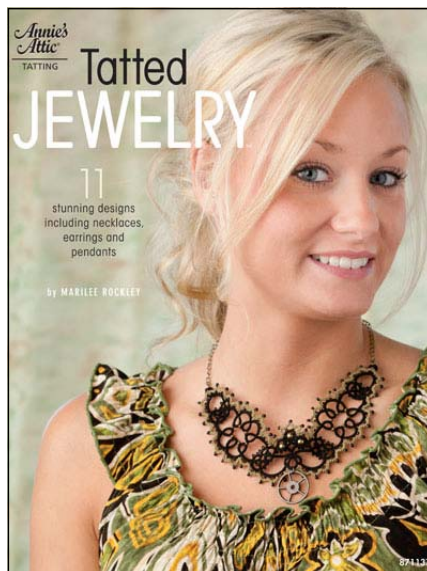
"She forwarded my shop's link to the VP of product and the wholesale director, and they too fell in love with them," recalled Marilee. "Of course I said yes!"

The designs were selected by the publisher, said Marilee; four were new and the others Marilee had self-published earlier. The book contains in-progress photos taken by Marilee herself, "as well as really beautiful photos taken by the publisher's professional photographer."

This spring, Marilee received another surprise. Online learning site [Craftsy.com](https://www.craftsy.com) wanted her to do a video course in shuttle tatting for them. They'd spotted her tatted jewelry article in the April *Bead&Button* magazine and things took off from there.

"No way was I going to turn down a free trip to Denver," joked Marilee. "

The project "was like writing a book in itself," said Marilee. She needed to design new projects that progressed from very beginner on up to most advanced — a total of 12 lessons. Ordinarily, she said, her students are all beginners.



Marilee's book for Annie's Attic has beautiful color photography.

Below, she is in front of the cameras and bright lights at [Craftsy](https://www.craftsy.com).

[Craftsy](https://www.craftsy.com) worked with her giving guidance and suggestions on structuring the course, and in May Marilee flew to Denver for three days for the taping. It was all very exciting and a little nerve-wracking as well, Marilee said.

"But the production people were super nice; I really enjoyed working with all the friendly folks at [Craftsy](https://www.craftsy.com). I'm thrilled to bits that they wanted to include tatting in their course offerings and asked me to teach it."

[Craftsy.com](https://www.craftsy.com), which is a year old, "Is a really good idea," said Marilee. "It's not like watching a video on YouTube. If something's not clear, students can ask the teacher questions, and even upload pictures of their problem areas. It's like a real community."



Marilee also wants LBS members to know that they can sell their own PDF patterns on [Craftsy](https://www.craftsy.com) via a totally free account. "And unlike on Etsy, when you buy on [Craftsy](https://www.craftsy.com) you can get an instant download," she added.

She is "always working on new ideas and patterns," and has two self-published books available in both printed and e-book formats. They are [Boutique Tatting](https://www.craftsy.com) and [Up and Tat 'Em](https://www.craftsy.com), both available at yarnplayer.etsy.com. Her blog is at yarnplayertats.blogspot.com.

She adds that learning to tat is a little like learning to ride a bicycle. You may think you can't do it, "But once you develop the muscle memory, you never lose it."

From Beaded Beetles to Blue Diamonds

Washington in the spring time. What can I say? It was my first time going to our Capitol, but it won't be my last. It had been a warm early spring in DC so the fabled cherry blossoms were already out when I got there, a full two weeks before the annual Cherry Blossom Festival.

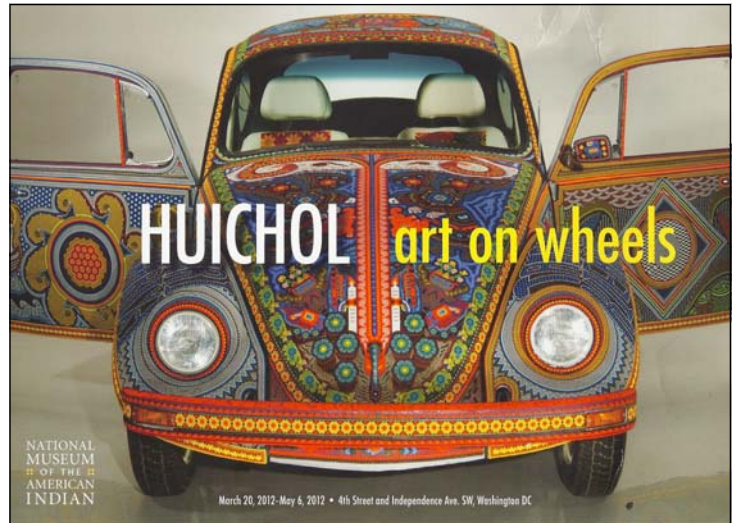
This year was a special celebration of the 100th anniversary of the first trees coming from Japan. Everyone was worried that the blossoms had peaked too soon (they had) and would be gone before the fest even started (they were). But boy, were they exquisite while they lasted! I wish I could bead them.

Anyway, on to the stuff you want to know about ... *BEADS* and *JEWELRY* and *GEMS/MINERALS*! In other words, the Smithsonian Museums.

The first one I visited was the American Indian Museum, which is an absolutely gorgeous building with beautiful grounds. They are having a special exhibit called A Song for the Horse Nation that runs until January 7, 2013, which is all about the Native Americans' relationship to their horses. All of the saddles, blankets, clothes, drums, etc. are heavily beaded. And the Castle Building — the original Smithsonian building with an overview of the other buildings — features a display of moccasins from various tribes that are just fantastic!



There was also a small exhibit called Huichol: Art on Wheels, from Mexico. This exhibit was an original VW Beetle that was completely covered in beads. Some 200 pounds of beads ... 2,277,000 beads to be exact ... 9,000 person hours of beads. OMG! The car is named Vochol, a combination of vocho — the name for the Beetle in Mexico, and



Huichol, a people in west-central Mexico known for their colorful beadwork and fiber arts.

The next museum I moved on to was the Natural History Museum. (And all the museums are free, so you can go as many times as you like.)



Can you say HOPE DIAMOND? OMG! Incredibly deep clear blue, surrounded by a gazillion white diamonds and suspended from a diamond chain. Even the guys looking at it were making oohing sounds and grabbing motions.

The Hope Diamond has a room of its own that leads into the jewelry room. Emeralds everywhere. More diamonds. Pearls. More emeralds. I could've done a snatch and grab, but really, emeralds and diamonds don't go with blue jeans.

From the jewelry room you move on into the raw materials. Shapes you've never seen before. Colors you only see while tripping (the illegal kind). HUGE rocks,

(Continued on next page)

Welcome New Members!

The Loose Bead Society is delighted to welcome the new members who've joined in the last three months. These Include:

March — **GINNY BENNETT, SANDY FUGARINO, KATY HESS, SHEILA MILLER, CHRIS PLICHTA, DIANA PRENTICE, LINDA RICHMAN, and LISA WALKER.**

April — **KATHY DARLAND, SUSAN GREENWALD, SUE GRIMYSER, DIANA HERSHAW, YVONNE JAECKEL, GEORGIA LADWIG, SANDY LENTZ, JESSICA PESTKA, KATHY QUASS, SUE REJMAN-ZEMBER, FAY RICHARDS, JENNY STEEGER, LIZ TERSelic, and DENISE UTTKE.**

May — **LIZ KNOLLE and MARY MOORE.**

Beetles and Diamonds

(Continued from previous page)

way too big to carry off. Every possible combination of elements that make up gem stones. Hundreds and hundreds of different minerals that we use to create our masterpieces.

Some of the stones are smooth, some are rough, Some fluoresce (glow in the dark) and in some you can see the crystalline structure. Some are huge, some are tiny. Some are hard like rock — and some are flaky like me. There was one that was plain old quartz crystal probably 10 feet tall and 8 feet wide made up of thousands of distinct crystals of different sizes that were fused together. You could feel the energy coming off that one!

These rooms went on forever with hundreds of specimens that I wanted to drink in, but it was so overwhelming that I had to go back — three times. My BFF who's lived in Washington for two years but hadn't seen the Smithsonian couldn't understand why I kept going back to the same exhibit over and over. Then she met me there one day after work. All she had to say was, "Oh."

The whole Smithsonian shebang is the legacy of an English scientist and philanthropist named James Smithson, who coincidentally discovered a beautiful mineral that became named, oddly enough, Smithsonianite. It can be a beautiful turquoise color but shiny, or a lovely garnety hue with the turquoise or a few other colors, each one gorgeous.

— *Diana Hershaw*



Loose Bead Society members recently participated in a “visioning” session for the organization. Each table of members recorded their ideas. As this scroll of paper shows, there were plenty of ideas to go around!

Bead Rummage Sale

Come one, come all, to the **Third Annual LBS Bead Rummage Sale** on Saturday, July 21, from 10 a.m. - 4 p.m. “Where?” you ask — at the New Berlin Library, of course! You can participate in two ways, by selling your beads and beading supplies or by coming and purchasing treasures galore.

The cost is only \$15 per table to sell your items. You must be an LBS member to rent a table; you may share a table with a fellow member if you like. You are in charge of your table - pricing, display and selling. Registration forms are available on the web and at the June and July meetings. All table funds go directly to the Loose Bead Society.

Sellers can also preorder lunch from Great Wraps — the form will provide more information. There is no admission fee to the Bead Rummage. LBS will advertise the sale and we encourage you to attend. Great deals were found by *all* last year and we predict the same this year!

BEADSHOW & BUTTON®

June 1–June 10, 2012 Frontier Airlines Center, Milwaukee WI



**Loose Bead Society
2012 Board Members**

- Julia Miller**, President
- Kathy Willmering**, President Elect
- Maggie Roschyk**, VP-Programming
- Kat Feldman**, VP-Special Events
- Judy Markworth**, Secretary
- Marilyn Johnson**, Treasurer
- Helen Dahms**, Past President
- Joan Jeselun**, Community Service Coordinator
- Judy Menting**, Membership Coordinator
- Carol Haiar**, Newsletter Coordinator
- Traci Otte**, Website Coordinator

Midwest Beads

The Store For Bead Enthusiasts!

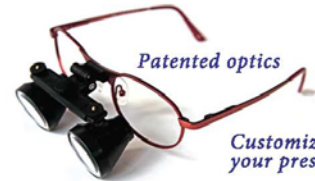
Midwest Bead & Supply, Inc.
Alice & Gary Lauber

15780 W. Capitol Drive
Brookfield, WI 53005
(262) 781-7670
www.midwestbeads.com

Craftoptics®

Magnify
your
talents®

See better. Feel better.



Patented optics

Customized with
your prescription

Visit craftoptics.com or call 888.444.7728.



Check out my workshops at
www.BeadShowMadison.com

BRENDA SCHWEDER
JEWELRY
www.BRENDASCHWEDER.COM

ELECTICA

Beads from around the World

Check Facebook or our website for:

Upcoming Trunk Shows

Monthly Class Schedule

Make & Take Events



www.eclecticabeads.com

bead bin

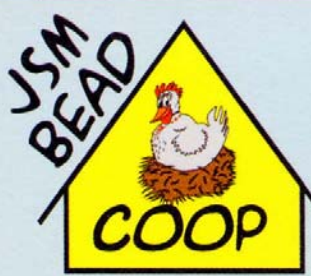
402 Westgate Mall
Madison, WI 53711

(608)274-0104

10-8 Weekdays 10-5 Sat 12-5 Sun

beadbinmadison.com
facebook.com/beadbinmadison

Everything you need to bead beautiful!



JSM BEAD COOP

931 N. 8th Street
Sheboygan, WI 53081
Phone: (920) 208-BEAD (2323)
Fax: (920) 208-2326
www.JSMBeadCoop.com
info@jsmbeadcoop.com

Hours: Tues to Sat 10am-7pm -- Closed Sun & Mon

Semi-Precious Stones - Pressed Glass - Bead Tools - Bead Classes

Loominosity 2012

Mark your calendars for the first weekend in November and start planning to participate in **Loominosity**, a sale and exhibit of handmade jewelry, wearable items and gifts. Participating in this show was a major initiative for our Society in 2010, we wowed 'em in 2011, and we are pleased to be cooperating again in 2012 with the Wisconsin Handweavers Guild. Think "boutique" as you start planning what you'll sell.

Last year, happy LBS exhibitors commented, "I loved how the jewelry was displayed and that there was a single checkout, loved that LBS took care of the credit card machine, change box and inventory control, and I really like having the display designers do the display because I learned from what they did." If you want to try selling, without buying tables, table drapes, cash boxes, display forms, etc., this is the place for you to try.

You know you enjoy sharing your love of beading, so remember that there will be plenty of opportunities to demonstrate whatever aspect of beading you're passionate about. The four-day show runs from Thursday, November 1 through Sunday, November 4. Show hours will be Thursday, 10 a.m. to 8:30 p.m.; Friday, 10 a.m. to 4:30 p.m.; Saturday, 10 a.m. to 4:30 p.m.; and Sunday, 1 to 4 p.m.

The event will be held at New Berlin Public Library in the Community Room, the same location as our monthly programs. Admission is free. We will be doing a significant amount of advertising. Details will be announced at future programs, on our website and through email.

Jewelry at the Domes

LBS has another opportunity for you to sell your beautiful creations – **Jewelry at the Domes**. This year's show will be Saturday and Sunday November 10 and 11. General Domes admission will apply to all visitors who attend the show and the visitors are welcome to tour the Domes as part of their admission.

Last year's show, on very short notice, went extremely well, and an amazing variety of jewelry was displayed. The staff of The Domes was extremely helpful and accommodating, and impressed each exhibitor by unloading her vehicle, wheeling her materials right to the assigned booth, and then unloading the cart.

LBS will be charging a booth fee. You must be an LBS member to participate as a vendor; you may share a booth with a fellow member. We will be doing quite a bit of advertising to support the event.



This year's Spring Retreat in Racine was, as usual, great fun. Above is the evening Button Necklace class (note the nightwear some are wearing), while students above right fashion Brick Stitch Wheel Pendants.



Cindy Collins

Beadwork Ingenieur
...putting it all together

Chain Maille
Polymer Clay
Beadwork

Muskogee, WI

Phone: 414.248.2654

www.beadworkingenieur.stay.com

cindy@beadworkingenieur.com

Loose Bead Society Of Greater Milwaukee
P.O. Box 35
Brookfield, WI 53008-0035

www.loosebeadsociety.org

Loose Bead Society Corporate Members

Corporate Sponsor

Kalmbach Publishing Company
(Publisher of *Bead&Button*, *BeadStyle* and *Art Jewelry* magazines)
21027 Crossroads Circle, P.O. Box 1612, Waukesha, WI 53187
262-794-8776 www.beadandbutton.com

Corporate Members

Bead Bin

608-274-0104 www.beadbinmadison.com
LBS discount: 10% off beads & findings

Beadwork Ingenieur

262-679-4496 www.beadworkingenieur.etsy.com

Brenda Schweder Jewelry

414-313-0234 www.brendaschweder.com
LBS discount: 15% off etsy with special code

CraftOptics

888-444-7728 www.craftoptics.com
LBS discount: free prescription with order

Eclectica

262-641-0910 www.eclecticabeads.com
LBS discount: 10% off beads & findings

JSM Bead Coop

920-208-2323 www.jsmbeadcoop.com
LBS discount: 10% off all merchandise

Midwest Beads

262-781-7670 www.midwestbeads.com
LBS discount: 10% off beads & findings